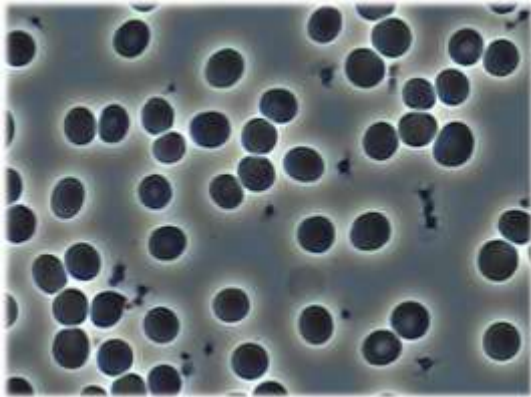




The memon® environmental transformers

A closer look



By Dr. David Clements



Interferences from Cars

Electrical & Magnetic fields

Magnetic field measured as measured at driver seat:

- Petrol 100 - 500 nT
- Diesel < 100 nT
- Sports car, S-Class > 10.000 nT

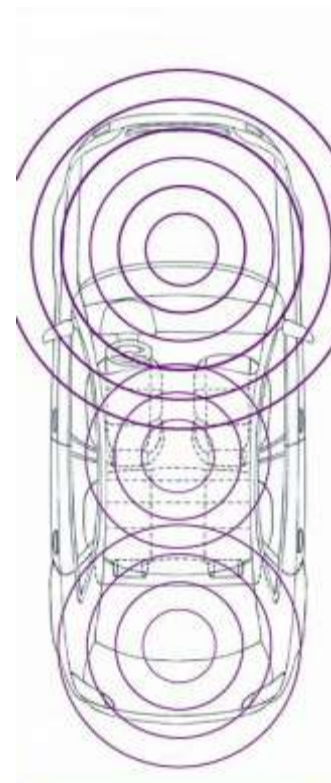
Electrical DC fields

Inside vehicle 100 - 10.000 V

Electromagnetic Field Car, 8 W

Distance 1 feet 95.000.000 $\mu\text{W}/\text{m}^2$

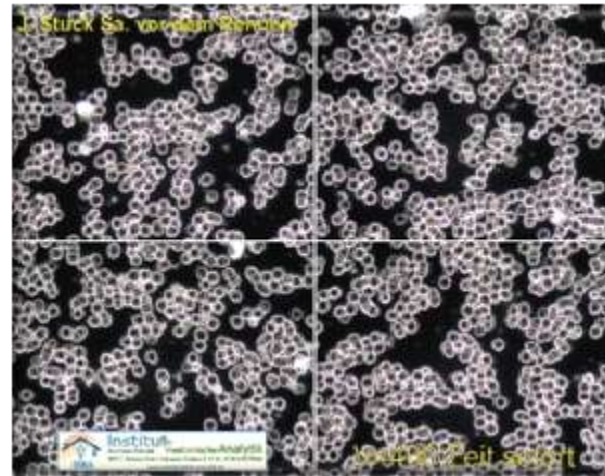
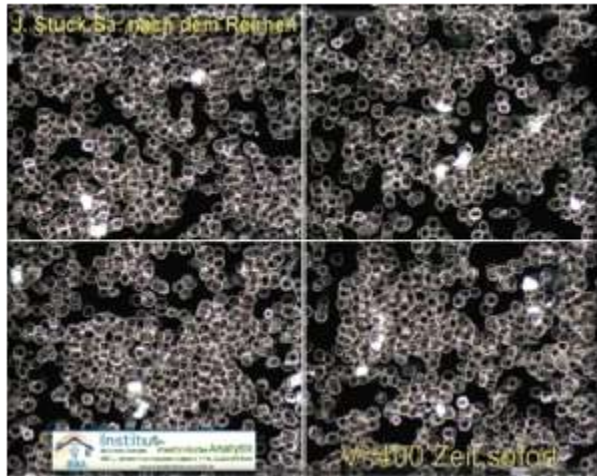
Distance 3 feet 8.500.000 $\mu\text{W}/\text{m}^2$





Johannes Stuck - a test under racing conditions

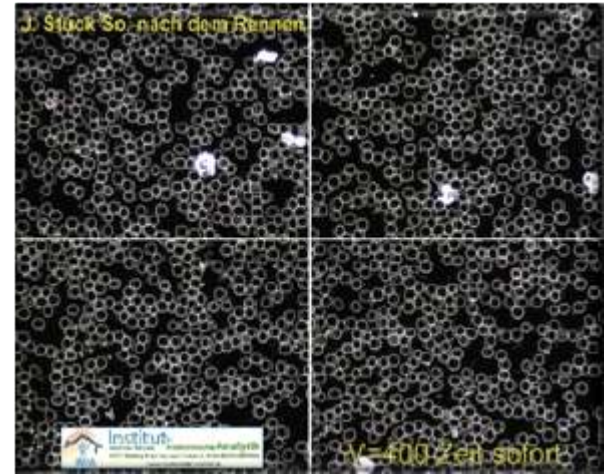
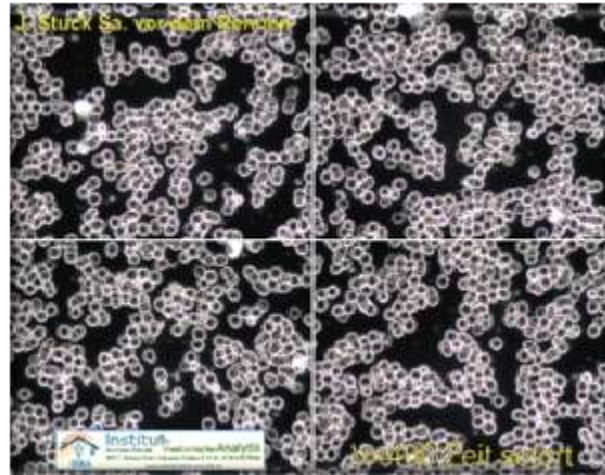
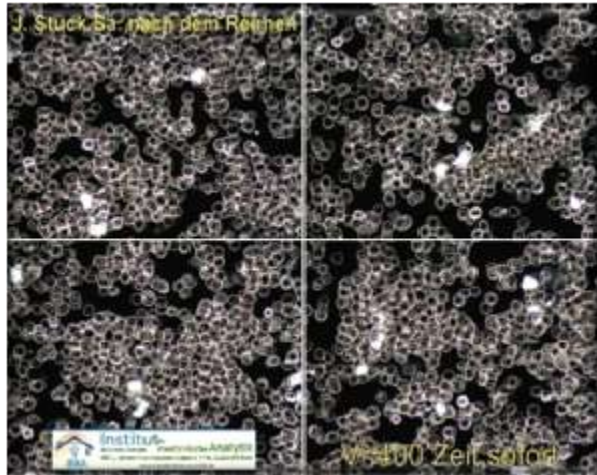
Conducted by the 'Institut für analytische Medizin', the purpose of this test was to see what the effects on his blood health would be before and after he took part in a normal race





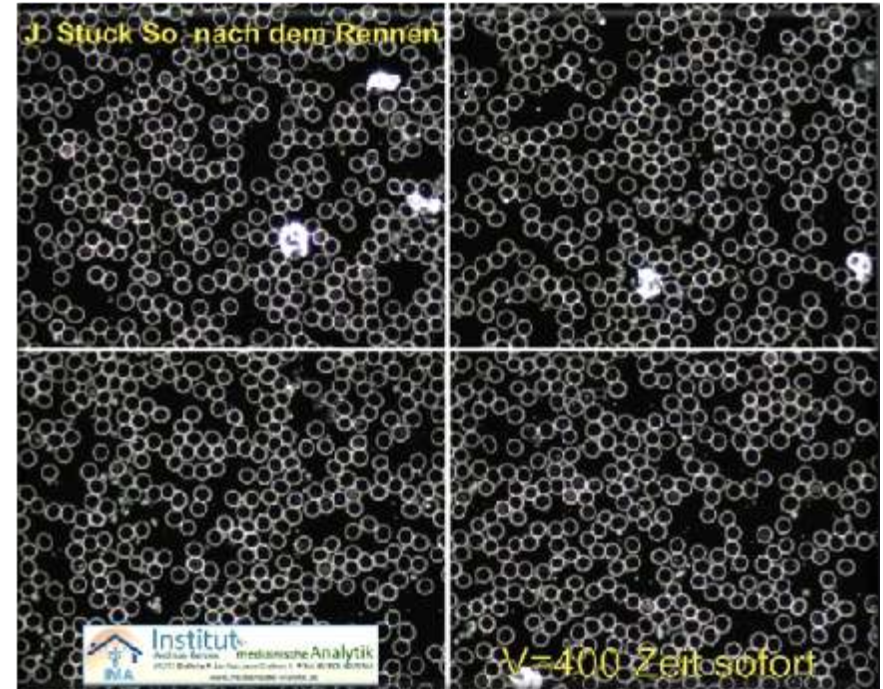
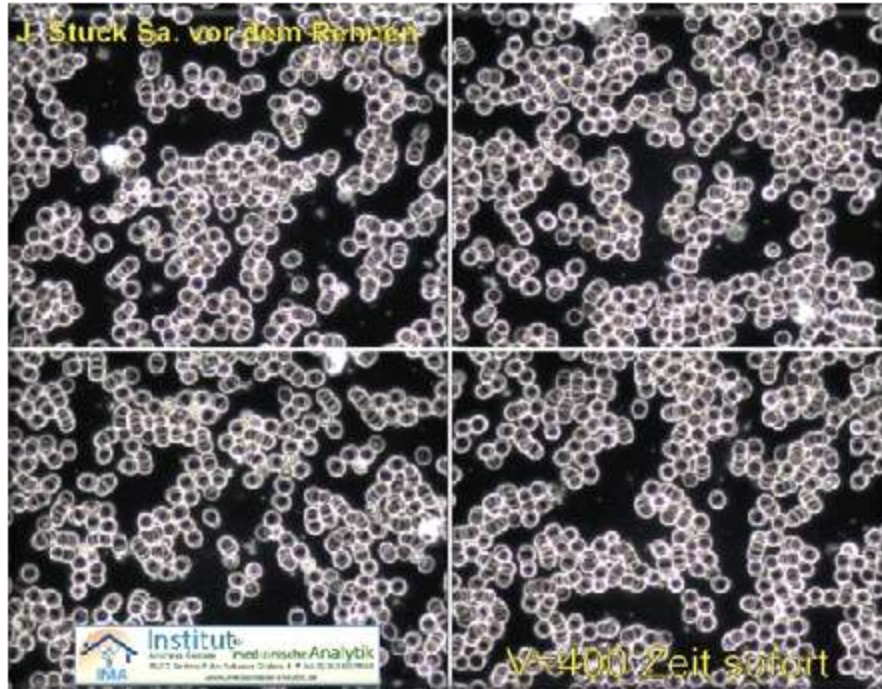
Johannes Stuck - a test under racing conditions

Conducted by the 'Institut für analytische Medizin', the purpose of this test was to see what the effects on his blood health would be before and after he took part in a normal race





A Close-up View





Comment by the Director of the Test

Using therapeutic-medicinal methods, it would be extremely difficult to bring about such enormous changes within so short a time. Thus in my opinion, a tremendous effect on health can be attributed to the CARTransformer, which I personally would not have expected. During the whole of my practical work up to the present using a dark field microscope, I have never come across such clear and positive results

- Andreas Gerzen, May 2011.

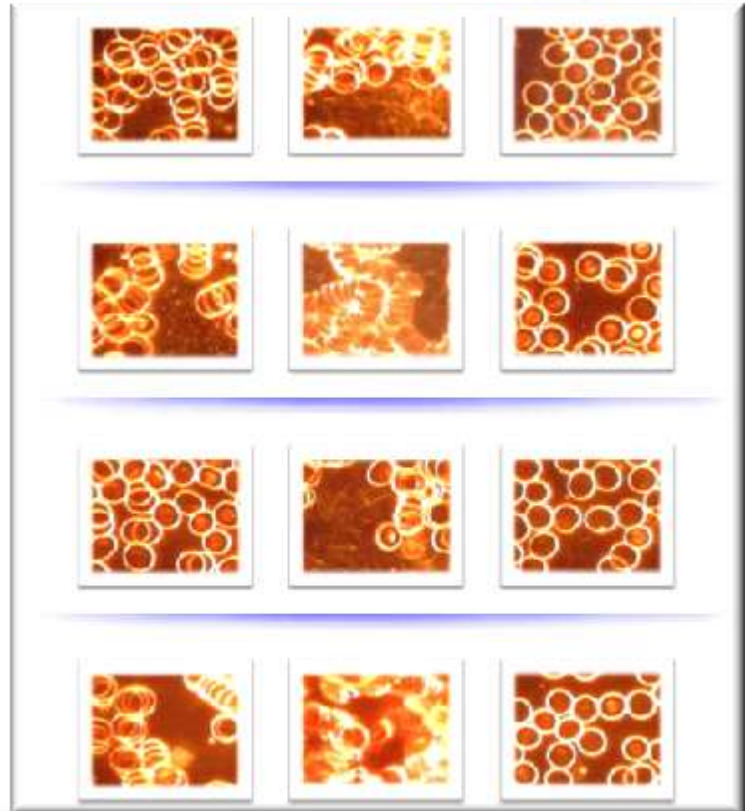


Test Subjects with a Hybrid Car

Test conducted by Dr. Michael Steinhofel and Dr. Ekkehard Scheller.

The purpose was to see the difference in blood health between purely electro-smog and psychological effects, before and after using memon technology in a hybrid car

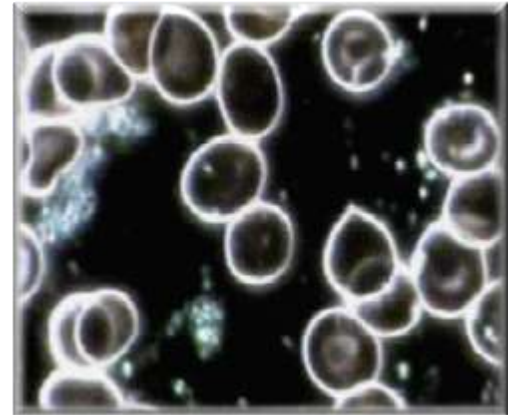
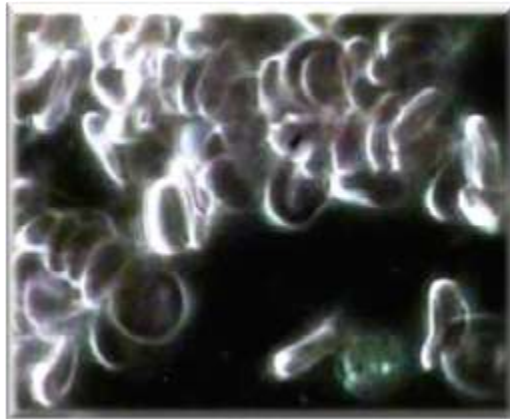
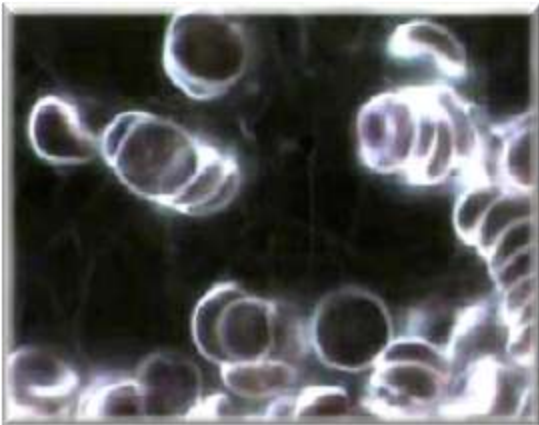
- Four test patients
- In a stationary hybrid car
- One using a laptop





Test under regular driving conditions

The purpose was to see the difference in blood health between before and after using memon technology in a regular car for 45 minutes driving





Bio-Resonance Results

Bio-resonance, or **physical medical resonance (PMR)** determines whether a biological sample has resonance with, and so is affected by, particular frequencies known to cause harmful effects in specific areas

Conducted by the 'Institute for Energy Field Measurement, Frequency, Testing & Analysis' (INEFA)

Effectiveness Proof of Harmonization Devices

The basis of our measure with commercially available frequency measuring devices is the examination of the existence of pathogenic regulation interferences like e.g. e-Smog, subterranean watercourses, lines of energy and other disturbing interferences on the human organism.

Product: mimon® E-Smog Transformer

clockwise rotational Energy content: **no** anti clockwise rotational Testing: **PMR/Testing**

The following interferences* have been measured

	possible	not possible
1. Interference Cell - Genetic Information		X
2. Interference Cell - Nuclear Membrane		X
3. Interference Cell Membrane		X
4. Interference Cell - Endoplasmatic Reticulum		X
5. Interference Cell - Mitochondria		X
6. Interference Cell - Nucleol		X
7. Interference Cell Nucleol		X
8. Interference Cell - Centriole		X
9. Interference Cell - Golgi Apparatus		X
10. Interference Cell - Ribosomes		X
11. Interference Cell - Lysosome		X
12. Interference Cell Body		X
13. Interference Allergy		X
14. Interference Heart Centre		X
15. Interference Arthritis		X
16. Interference Inflammations		X
17. Interference Lack of Oxygen		X
18. Interference Nerves		X
19. Interference Dehydration of the Body		X
20. Interference Lack of Concentration		X
21. Interference Hay Fever		X
22. Interference Dizziness		X
23. Interference Depressions		X
24. Interference Psoriasis		X
25. Interference Vegetative Nervous System		X
26. Interference Osteoporosis		X
27. Interference Inflammation of Joints		X
28. Interference Electro smog		X

Possible = Device **does not work** for the protection of the human organism
Not possible = Device **does work** for the protection of the human organism

***Interference** - Overlaying of waves, which is only possible if the phases of the waves possess stable phase relations during the measuring time. An equal phase overlaying, when wave crest meets wave crest leads to a so called constructive interference with an amplification of the amplitude. A counter phase overlaying, when wave crest meets wave trough leads to a so called destructive interference with an elimination of the amplitude.

Date:
28.11.2012

Testing Institute:





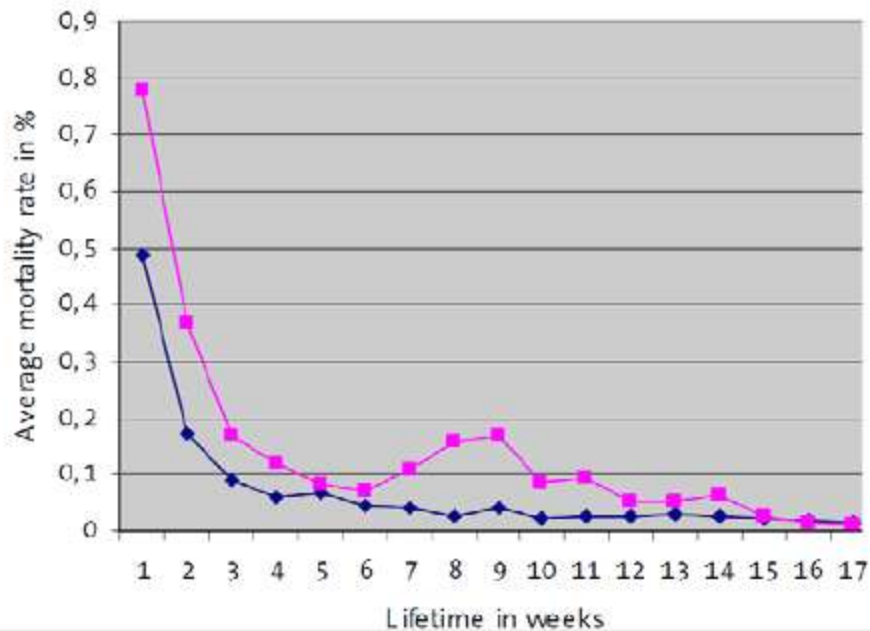
The Effect on Behaviour and Mortality

A number of chicken farms in Switzerland took part in a test to look at the wellbeing and mortality rates of their chickens before and after memon was introduced into their environment.

After 18 weeks the average drop in mortality was 49%

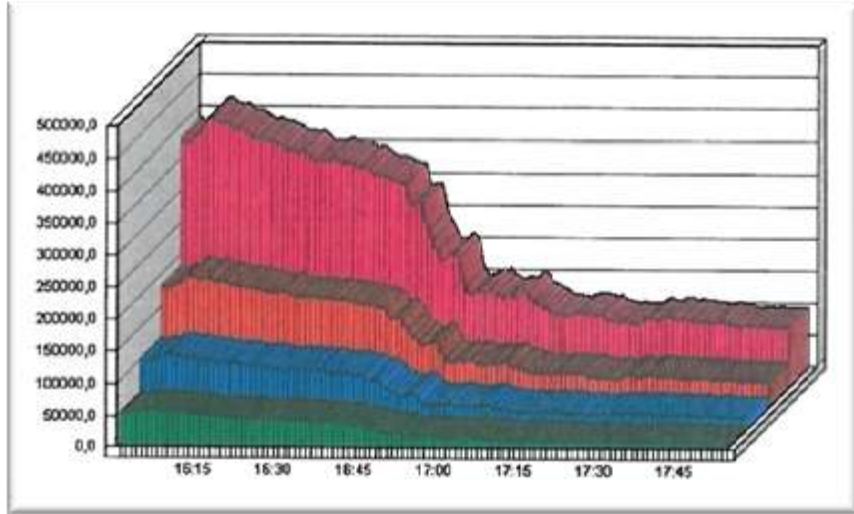
Without memon

With memon

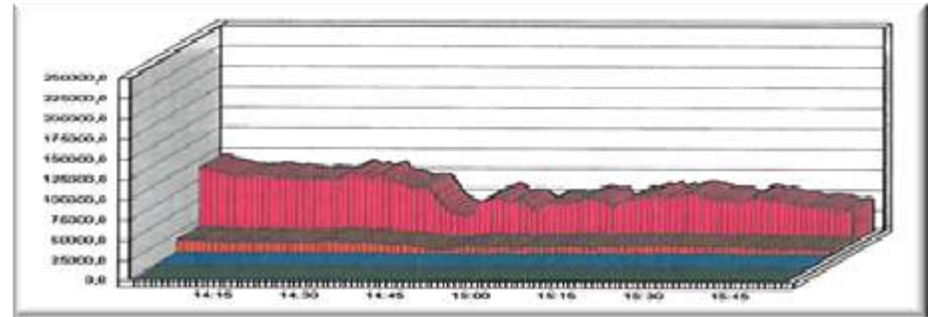




Air – Fine Particles in the Workplace



Copy Centre in Dresden (without memon)



Copy Centre in Dresden (**with memon**)



Water memory and results

Water has a peculiar property of mimicking that which it has been exposed to, chemically or energetically

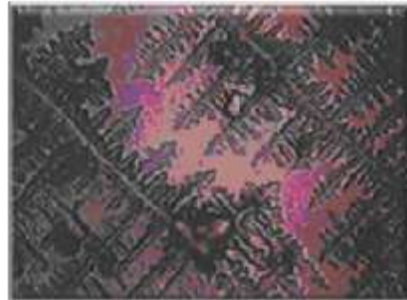




Water memory and results

Some of the typical substances that drinking water can have memory of:

- Pesticides
- Lead - from old piping
- Hormonal derivatives – the pill
- Medicinal residues
- Electro-Smog (*from ambient sources or even pumping and transport equipment*)
- Fluorine
- Chlorine
- Other treatment Agents





Water memory and results

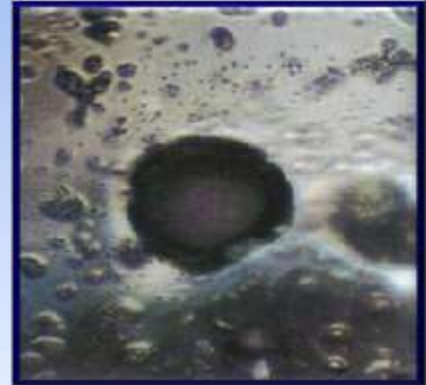
Some of the typical substances that drinking water can have memory of:



Microwave Water



Thank you in Japanese

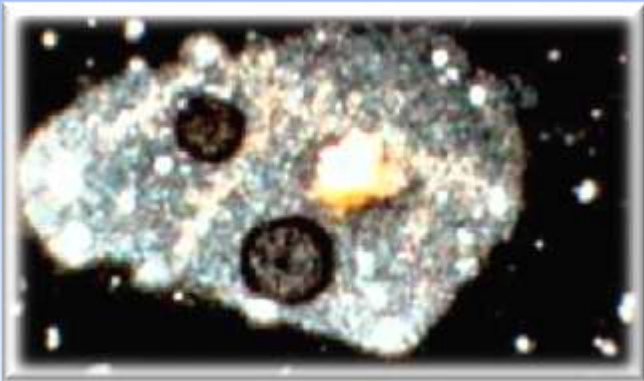


Mobile Phone Water



Water memory and results

The results of Bernd Bruns



Electro-Smog Water



Natural Spring Water



Water memory and results

The results of Bernd Bruns



Water Rich in Minerals (Iron)



Water Poor in Minerals



Copper Chloride Crystallization Results



Crystallization of Munich city tap water

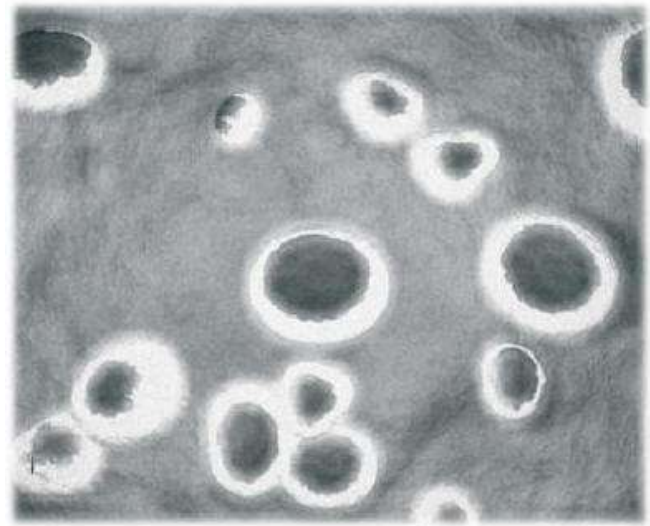
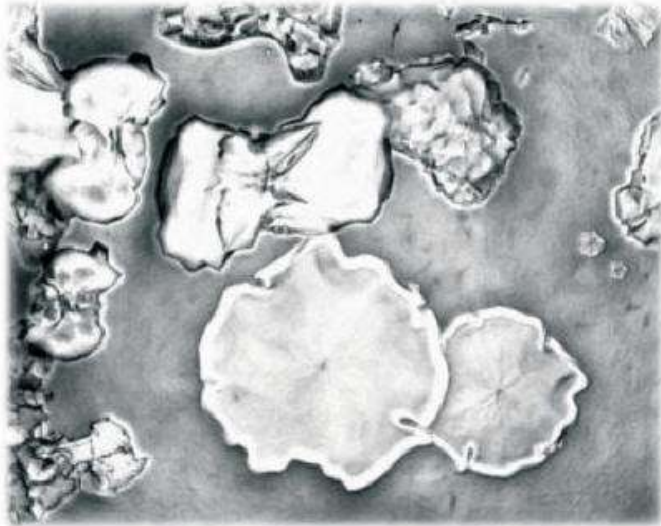


...after being transformed with memon



The Effect of Pathogenic Information Removal on Minerals in Water

The removal of pathogenic information's in water can also be seen on the mineral deposits in water, showing a softening from the usual hard edged deposits





Bacteriological Test Results

Test conducted in Stadensen open air Olympic sized swimming pool
Treatment agents were reduced to legal minimum during the test



The maximum allowed value for the total measurement of coli-bacteria is 1500. After the harmonizing device was fitted, the value in Stadensen was **0**.



Bacteriological Test Results

Test conducted by Dr. Michael Steinhöfel to look at the bacteria present in water before and after memon





The memon[®] environmental transformers

A solution for environmental transformation

The simple idea of the memon[®] transformers is to restore an environment, or workspace, back the energetic conditions found in nature

Allowing those who are living or working in such spaces to be in the modern world as if such interferences from technologies were not present at all





Thank you for listening



For more information, please visit www.inharmonywithnature.co.uk
